



LPAAT- γ Polyclonal Antibody

Catalog No	YP-Ab-02658
Isotype	IgG
Reactivity	Human;Mouse;Rat
Applications	WB;ELISA;IHC
Gene Name	AGPAT3
Protein Name	1-acyl-sn-glycerol-3-phosphate acyltransferase gamma
Immunogen	The antiserum was produced against synthesized peptide derived from human AGPAT3. AA range:121-170
Specificity	LPAAT- γ Polyclonal Antibody detects endogenous levels of LPAAT- γ protein.
Formulation	Liquid in PBS containing 50% glycerol, 0.5% BSA and 0.02% sodium azide.
Source	Polyclonal, Rabbit,IgG
Purification	The antibody was affinity-purified from rabbit antiserum by affinity-chromatography using epitope-specific immunogen.
Dilution	WB 1:500-2000;IHC-p 1:50-300; ELISA 2000-20000
Concentration	1 mg/ml
Purity	$\geq 90\%$
Storage Stability	-20°C/1 year
Synonyms	AGPAT3; 1-acyl-sn-glycerol-3-phosphate acyltransferase gamma; 1-acylglycerol-3-phosphate O-acyltransferase 3; 1-AGP acyltransferase 3; 1-AGPAT 3; Lysophosphatidic acid acyltransferase gamma; LPAAT-gamma
Observed Band	40kD
Cell Pathway	Endoplasmic reticulum membrane ; Multi-pass membrane protein . Nucleus envelope .
Tissue Specificity	Widely expressed with highest levels in testis, pancreas and kidney, followed by spleen, lung, adipose tissue and liver.
Function	catalytic activity:Acyl-CoA + 1-acyl-sn-glycerol 3-phosphate = CoA + 1,2-diacyl-sn-glycerol 3-phosphate.,domain:The HXXXXD motif is essential for acyltransferase activity and may constitute the binding site for the phosphate moiety of the glycerol-3-phosphate.,function:Converts lysophosphatidic acid (LPA) into phosphatidic acid by incorporating an acyl moiety at the sn-2 position of the glycerol backbone.,pathway:Phospholipid metabolism; CDP-diacylglycerol biosynthesis; CDP-diacylglycerol from sn-glycerol 3-phosphate: step 2/3.,similarity:Belongs to the 1-acyl-sn-glycerol-3-phosphate acyltransferase family.,
Background	The protein encoded by this gene is an acyltransferase that converts lysophosphatidic acid into phosphatidic acid, which is the second step in the de novo phospholipid biosynthetic pathway. The encoded protein may be an integral



membrane protein. Two transcript variants encoding the same protein have been found for this gene. [provided by RefSeq, Jul 2008],

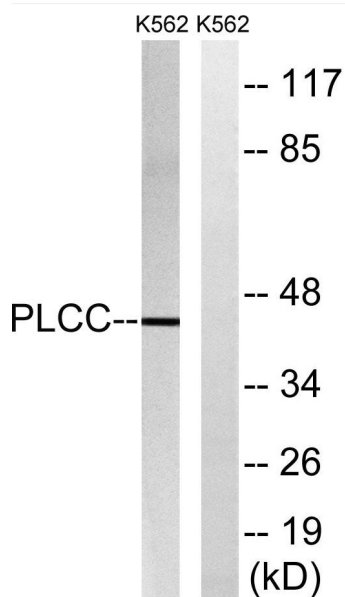
matters needing attention

Avoid repeated freezing and thawing!

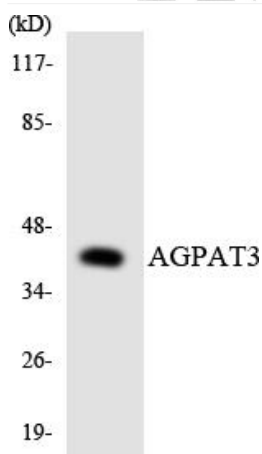
Usage suggestions

This product can be used in immunological reaction related experiments. For more information, please consult technical personnel.

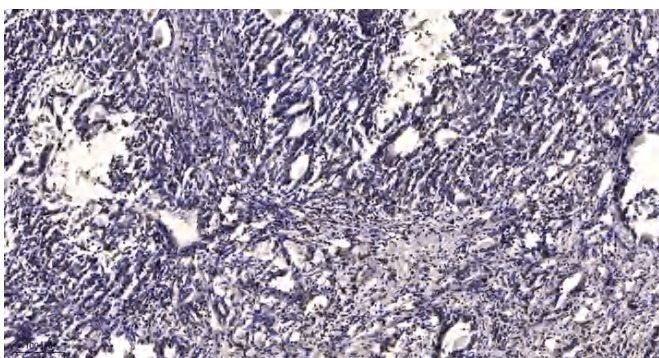
Products Images



Western blot analysis of lysates from K562 cells, using AGPAT3 Antibody. The lane on the right is blocked with the synthesized peptide.



Western blot analysis of the lysates from COLO205 cells using AGPAT3 antibody.



Immunohistochemical analysis of paraffin-embedded human Gastric adenocarcinoma. 1, Antibody was diluted at 1:200(4° overnight). 2, Tris-EDTA,pH9.0 was used for antigen retrieval. 3,Secondary antibody was diluted at 1:200(room temperature, 45min).